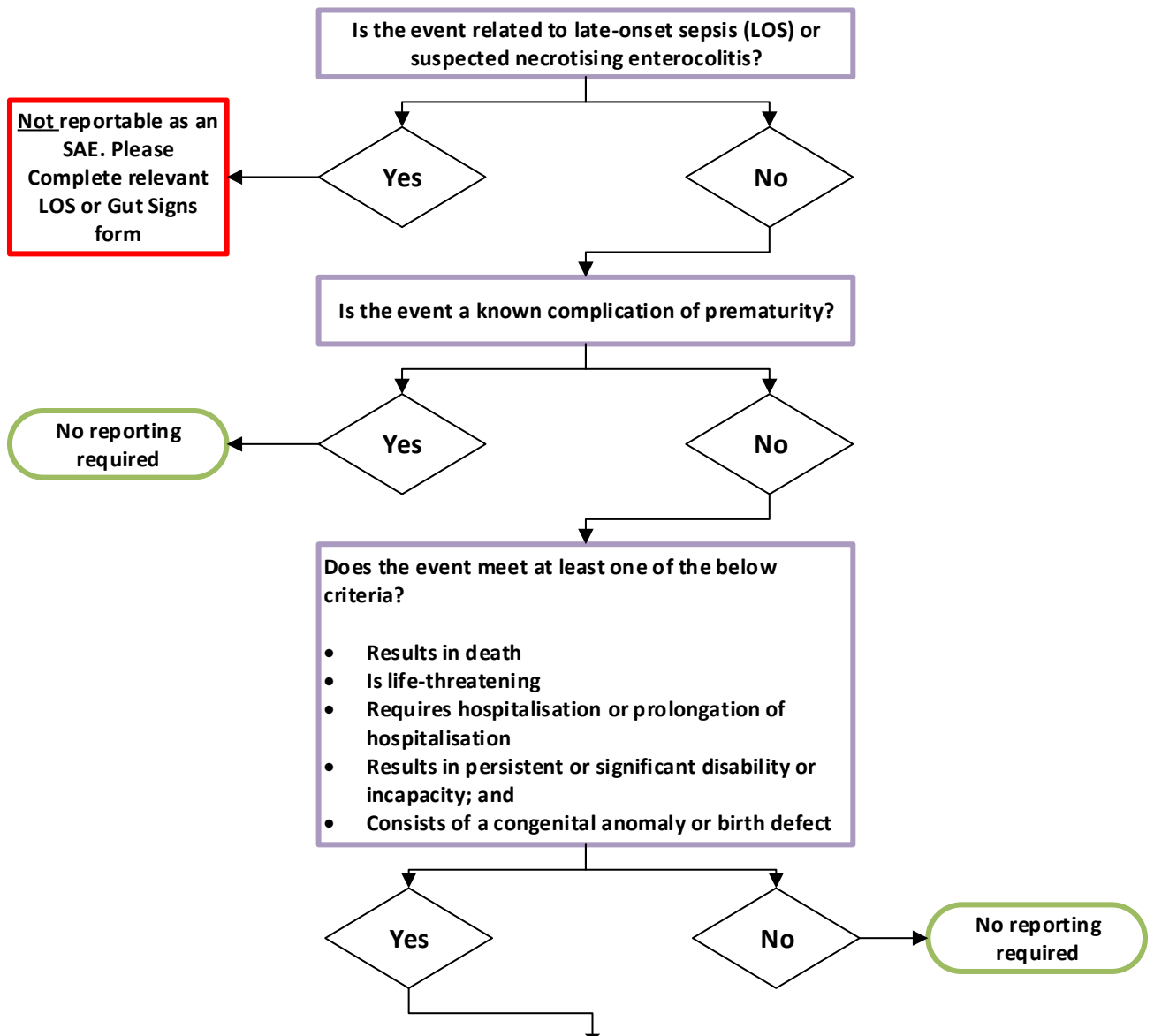


Serious Adverse Event Reporting

Flowchart



SAE

The investigator (or appropriate delegate) must complete and sign an SAE form. When completing the SAE form the investigator will be asked to define the causality and relatedness to the interventions.

The form should arrive at NCTU by email or fax (as below) as soon as possible and no later than 24 hours after first becoming aware of the event.

To report an SAE:

Email the SAE Form to: nctu-sae@nottingham.ac.uk

Or fax the SAE Form to: 0115 74 84092